

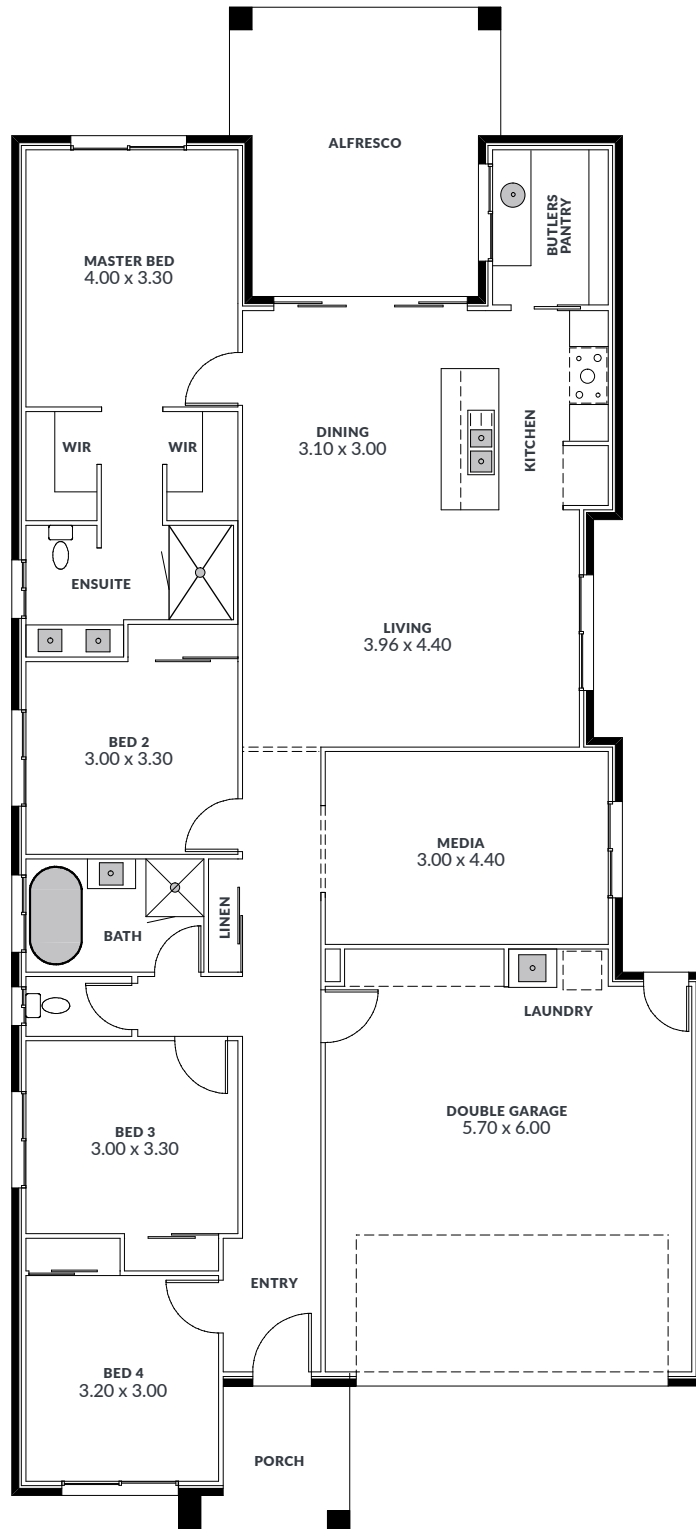


**NORTH HARBOUR  
DISPLAY CENTRE**

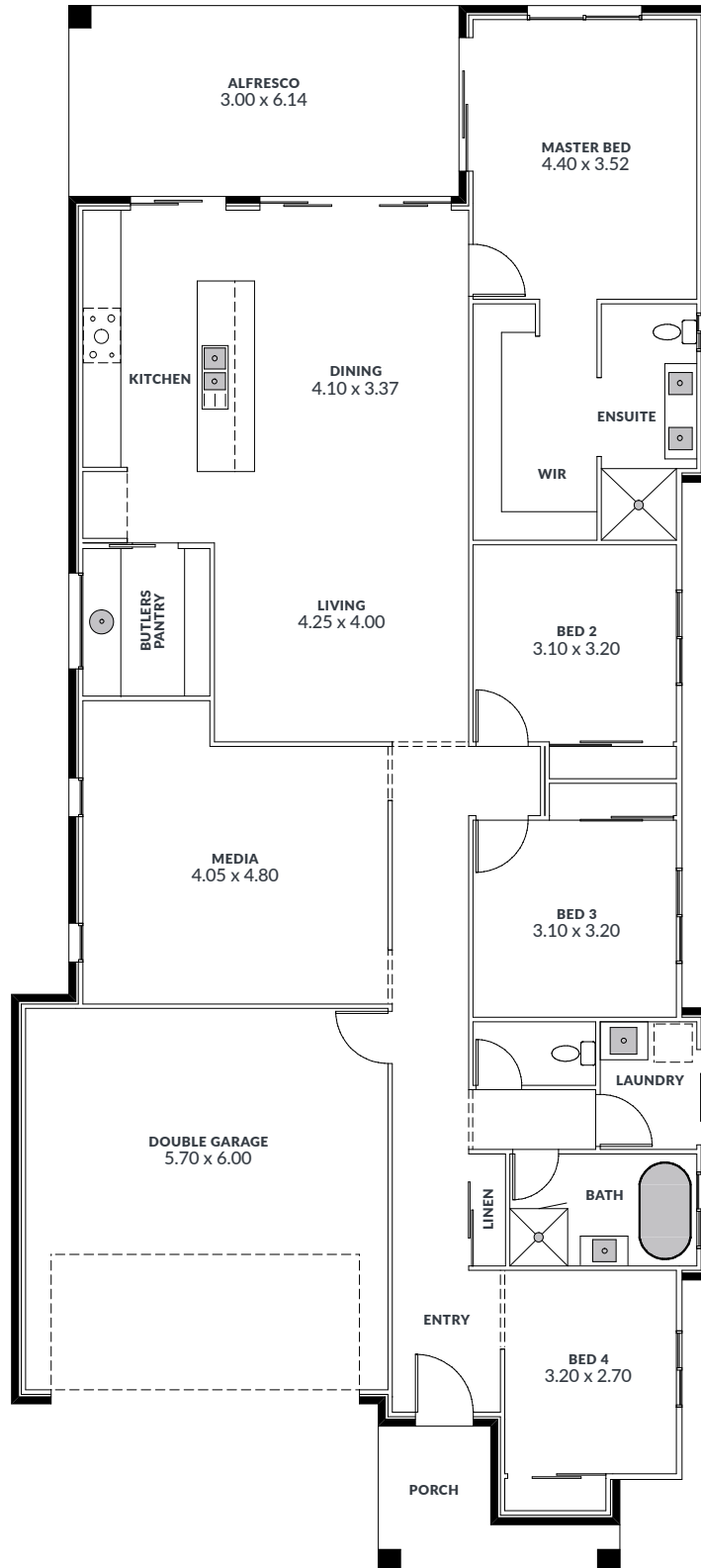
Clare & Vince Nastri • 0433 388 311 • [clare@homesbycma.com.au](mailto:clare@homesbycma.com.au)



**CREATIVE • MODERN • AFFORDABLE**



FLOOR AREA	LENGTH	WIDTH	FRONTAGE
210.66m <sup>2</sup>	21.74m	10.80m	12.5m



FLOOR AREA	LENGTH	WIDTH	FRONTAGE
234.37m <sup>2</sup>	24.63m	11.00m	12.5m+

## DISPLAY HOMES

### AURA

26 Berry Terrace  
Bells Creek Q

SATURDAY - WEDNESDAY  
10:00am to 5:00pm

Paul Johnson  
E [paul@homesbycma.com.au](mailto:paul@homesbycma.com.au)  
M 0400 707 535

### BROOKHAVEN - BAHRS SCRUB

18 Bronzewing Cct  
Bahrs Scrub Q

SATURDAY - WEDNESDAY  
10:00am to 5:00pm

Patrick Gaffney  
E [patrick.g@homesbycma.com.au](mailto:patrick.g@homesbycma.com.au)  
M 0434 821 923

### NEWPORT

3 Comanche Street  
Newport Q

SATURDAY - WEDNESDAY  
10:00am to 5:00pm

Simon Schott  
E [simon@homesbycma.com.au](mailto:simon@homesbycma.com.au)  
M 0412 144 887

### NORTH HARBOUR

5 & 7 Newton Street  
Burpengary East Q

SATURDAY - WEDNESDAY  
10:00am to 5:00pm

Clare & Vince Nastri  
E [clare@homesbycma.com.au](mailto:clare@homesbycma.com.au)  
M 0433 388 311

### PROVIDENCE - SOUTH RIPLEY

22 & 24 Unity Lane  
South Ripley Q

SATURDAY - WEDNESDAY  
10:00am to 5:00pm

Dante DeLuca  
E [dante@homesbycma.com.au](mailto:dante@homesbycma.com.au)  
M 0431 094 137

# st cma DESIGN studio

NOW  
OPEN

Building with Homes by CMA is an amazing experience and the CMA Design Studio plays a key role in ensuring your new home is the very best it can be.

Here's where leading brands are on display, your ideas are brought to life, colours and styles are chosen. Kitchens, bathrooms, bedrooms and living spaces. Finishes and fittings, flooring, roofing, appliances, bricks and tiles.

The choice is spectacular, the quality is top notch and we'll help you select what suits you best. Best of all, we're transparent with pricing. So there's no guesswork, no unexpected surprises.

MONDAY - FRIDAY 8.30am to 5:00pm  
SATURDAY 9:00am to 4:00pm

41 Flinders Parade, North Lakes Q 4509

